

# State of Wyoming Corner Record

(In compliance with the CORNER PERPETUATION AND FILING ACT, Wyoming Statutes, 1997 Section 33-29-140 et. seq., and the Rules and Regulations of the Board of Professional Engineers and Professional Land Surveyors)

Reverse side of this form may be used if more space is needed.

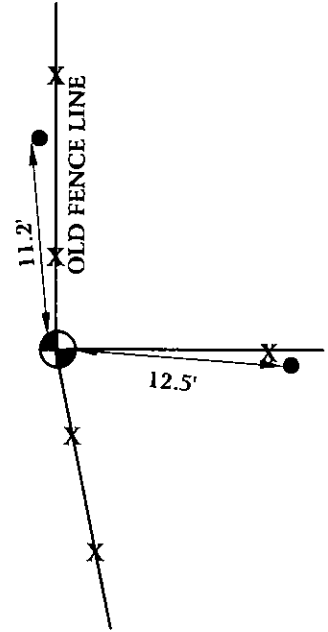
Record of original survey and citation of source of historical information (if corner is lost or obliterated). Description of corner monumentation evidence found and/or monument and accessories established to perpetuate the location of this corner. Sketch of relative location of monument, accessories, and reference points with course and distance to adjacent corner(s) (if determined in this survey). Method and rationale for reestablishment of lost or obliterated corner.

ORIGINAL CALL FOR 14" X 12" X 6" LIMESTONE.

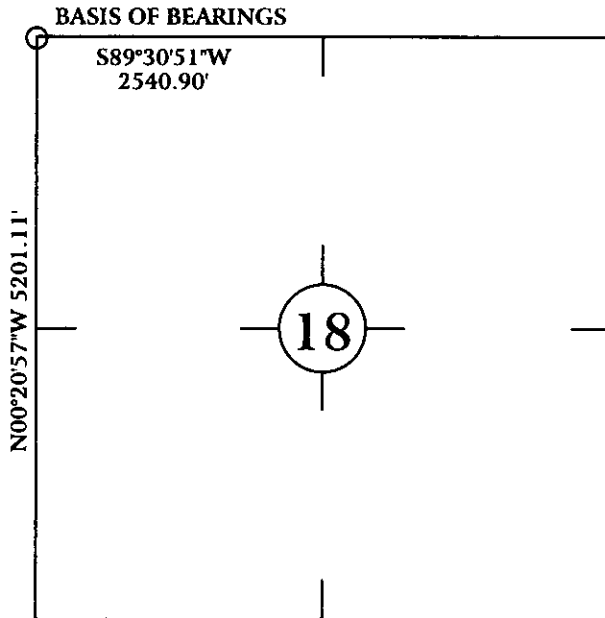
FOUND 3/4" I.D. PIPE ON NORTHEAST SIDE OF OLD FENCE CORNER POST. PIPE AND POST ARE LEANING TO THE NORTHEAST.

ACCEPTED SW BASE OF OLD POST AND SET 3/4" X 30" REBAR WITH 3 1/4" ALUMINUM CAP P.L.S. 6099, AND SET TIES AS SHOWN BELOW.

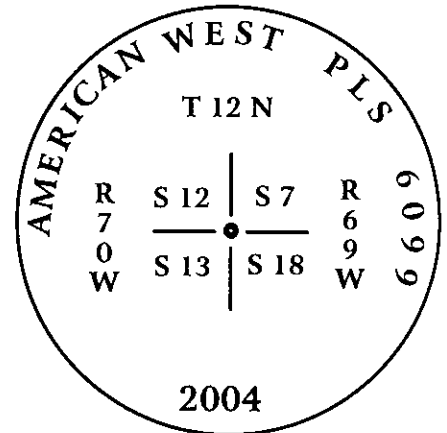
● = SET 5/8" X 24" REBAR WITH 1 1/2" ALUMINUM CAP. P.L.S. 6099.



## Monument location



## Monument Inscription



Date of Field Work: 10/21/04

Office Reference: AW04-8634

3 1/4" ALUMINUM CAP ON 3/4" X 30" REBAR

## Cross Index Plat

	1	2	3	4	5	6	7	8	9	10	11	12	13	14	15	16	17	18	19	20	21	22	23	24	25		
A																										A	
B																										B	
C		6	5	4	3	2	1																			C	
D																											D
E																											E
F																											F
G		7	8	9	10	11	12																				G
H																											H
I																											I
J																											J
K																											K
L		18	17	16	15	14	13																				L
M																											M
N																											N
O																											O
P		19	20	21	22	23	24																				P
Q																											Q
R																											R
S																											S
T		30	29	28	27	26	25																				T
U																											U
V																											V
W																											W
X		31	32	33	34	35	36																				X
Y																											Y
Z																											Z

Firm/Agency, Address  
 CHARLES H. RUSSELL P.L.S. 6099  
 AMERICAN WEST LAND SURVEYING CO.  
 29 SOUTH 4TH AVENUE  
 BRIGHTON, CO 80601

Telephone Number:  
 303-659-1532

This corner record was prepared by me or under my direction and supervision.

SEAL & SIGNATURE



RECORDED 2/17/2005 AT 1:46 PM REC# 409595 BK# 1865 PG# 135  
 DEBRA K. LATHROP, CLERK OF LARAMIE COUNTY, WY PAGE 1 OF 1

Corner Name: Northwest Corner, Sections 18, T 12 N, R 69 W, 6th P.M.  
 County: Laramie

Cross-Index No.: J-1